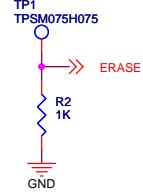
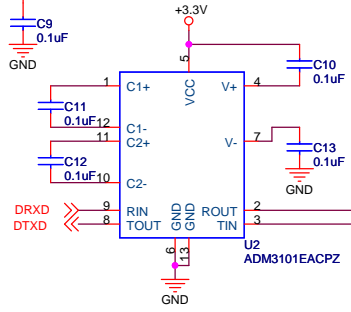


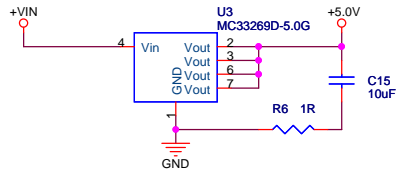
Short TP1 to 3.3V or 5.0V during startup to replace bootloader



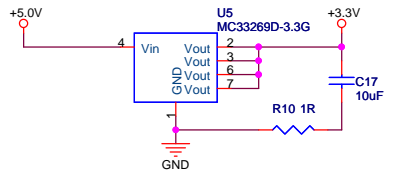
RS232 Level Converter



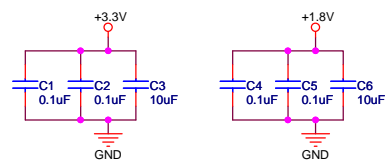
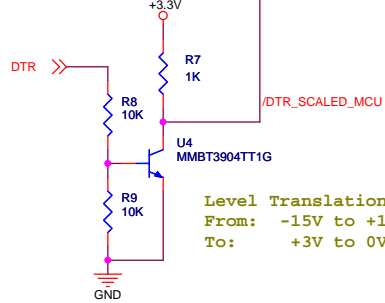
+7.5V to +12V DC (9V Preferred) to 5V LDO Converter



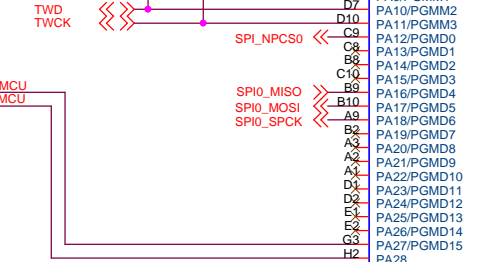
5V to 3.3V LDO Converter



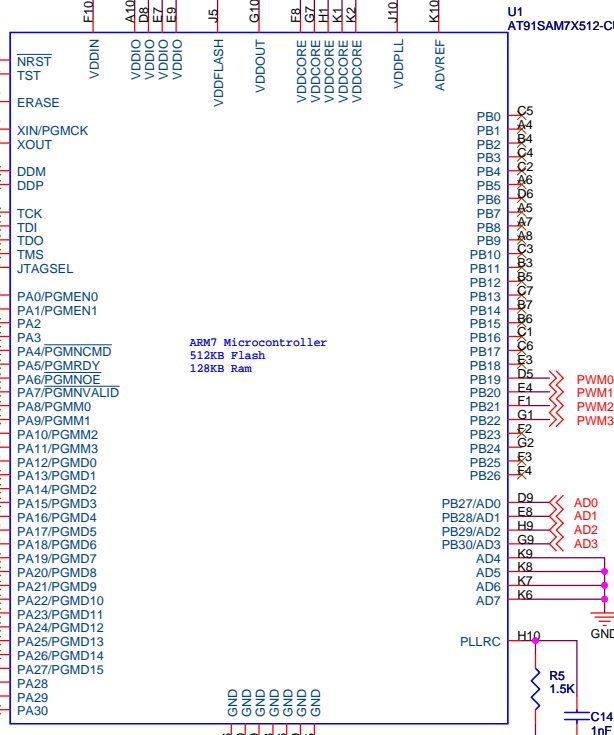
Level Translation
From: -15V to +15V
To: +3V to 0V



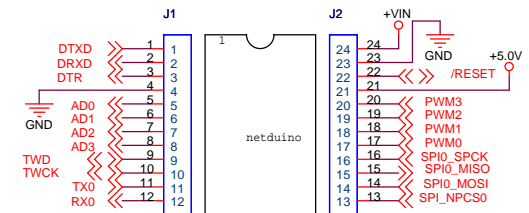
2 wire bus



ARM7 Microcontroller
512KB Flash
128KB Ram



Dual in line edge pins:
Cutt pin portion, beyond standoff, to 0.125" (3.2 mm)



DIL100IMP12M-T-V-E_01-12 DIL100IMP12M-T-V-E_13-24

Pin 21: If +VIN providing power, pin 21 is +5.0V regulated output. If +VIN unused, pin 21 is +5.0V regulated input.

Pin 23: Input Power GND

Pin 24: +VIN Input (+7.5 to +12 VDC, 9V Preferred)

Title		
Netduino Mini		
Size	Document Number	Rev
B	CW0002	A
Date:	Wednesday, October 20, 2010	Sheet 1 of 1